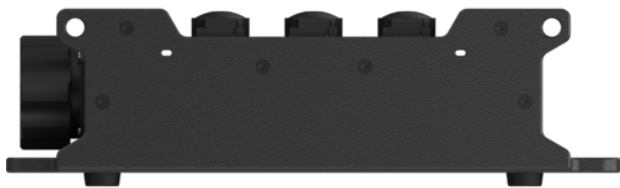


Power Strip Multicore CPSM-S1-T6

IN: 1x Socapex 419 compatible – OUT: 6x powerCON®
TRUE1® TOP



Power Strip Multicore are extremely rugged and compact distribution boxes which allow significant reduction of the cabling effort and cost due to the multicore inputs. It is ideally suited for outdoor usage and demanding mobile applications. 1x Socapex 419 compatible In – 6x powerCON® TRUE1® TOP Out



Features & Benefits

- **Reduction of cabling volume and effort** due to Socapex 419 compatible multipin Input / Daisy-chain.
- **High mechanical protection:** Rugged Easylen® housing with high IK, full connector protection with housing elements.
- **Xtreme Outdoor protection:** IP65 with Socapex 419 compatible in mated condition, sealing caps
- **Very compact design:** Height & Width only 96mm & 150mm due the stepped top plate.
- **Easy transport & handling:** stackable, lightweight, fully lockable. Options with the handle on the request.
- **Versatile mounting options:** mounting wholes for pegs and suspension, truss clamp

Markets & Applications

- Markets: Professional video wall / lighting / audio
- Mobile application: Festivals, live events
- Semi-permanent applications: Theaters, studios

Ordering information

Article name	Details	Order code
CPSM-S1-T6	IN: 1x Socapex 419 compatible, OUT: 6x powerCON T1 TOP	1037503

Technical Information

Product	
Input device	1x Socapex 419 compatible (6 channels)
Output device	6x powerCON® TRUE1® TOP with self-closing caps

Electrical	
Contact resistance / protection class Dielectric strength	Protection class II
Dielectric strength	0,5 kV / mm
Rated voltage	250V AC
Rated Current	16A

Mechanical	
Dimensions	150 x 95,25 x 330mm
Weight	
Conductor cross section	2,08 mm ²
Mounting options	Truss clamp (M10), mounting wholes for pegging or suspension
Type of construction	Stackable

Material	
Housing	Easylen
Color	black

Environmental

Flammability acc. to UL 94	V-2
Protection class	IP65 with Socapex 419 compatible connector in mated condition
Temperature range	-25 °C bis +40 °C