

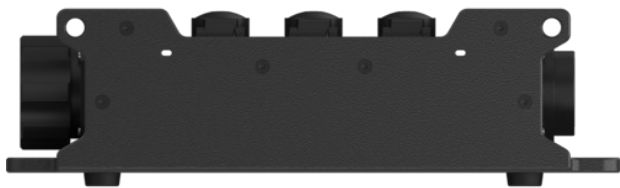


Power Strip Multicore CPSMS-S2-T6 (U.S.)

IN: 1 x Socapex 419 compatible – OUT: 6 x
powerCON® TRUE1® TOP, 1 x Socapex 419 compatible

Power Strip Multicore are extremely rugged and compact distribution boxes which allow significant reduction of the cabling effort and cost due to the multicore inputs. It is ideally suited for outdoor usage and demanding mobile applications. 2 x Socapex 419 compatible In – 6 x powerCON® TRUE1® TOP Out

COMING SOON!



Features & Benefits

- ✓ Reduction of cabling volume and effort due to Socapex 419 compatible multipin Input / Daisy-chain.
- ✓ High mechanical protection: Rugged Easylen® housing with high IK, full connector protection with housing elements.
- ✓ Xtreme Outdoor protection: IP65 with Socapex 419 compatible in mated condition, sealing caps
- ✓ Very compact design: Height & Width only 96mm & 150mm due the stepped top plate.
- ✓ Easy transport & handling: stackable, lightweight, fully lockable. Options with the handle on the request.
- ✓ Versatile mounting options: mounting wholes for pegs and suspension, truss clamp

Market & Application

- ✓ Markets: Professional video wall / lighting / audio
- ✓ Mobile application: Festivals, live events
- ✓ Semi-permanent applications: Theaters, studios

Ordering information

Article name	Details	Order code
CPSMS-S2-T6	IN / Daisy chaining: 2 x Socapex 419 compatible, OUT: 6 x powerCON® TRUE1® TOP	1038774

Technical Information

Product

Input device	1 x Socapex 419 compatible (6 channels)
Output device	6 x powerCON® TRUE1® TOP with self-closing caps
Daisy chaining	1 x Socapex 419 compatible (6 channels)

Electrical

Contact resistance / protection class Dielectric strength	Protection class II
Dielectric strength	0,5 kV / mm
Rated voltage	250V AC
Rated Current	20A

Mechanical

Dimensions	150 x 95,25 x 330mm
Weight	
Conductor cross section	AWG12
Mounting options	Truss clamp (M10), mounting wholes for pegging or suspension
Type of construction	Stackable

Material

Housing	Easylen
Color	black

Environmental	
Flammability acc. to UL 94	V0
Standard compliance	ETL Listing according to UL Standard 1640 – Pending
Protection class	With Socapex 419 compatible connector in mated condition: NEMA3R listing – pending; IP65.
Temperature range	-25 °C bis +40 °C