



# Catalogue cPot

2021 / 2022



# cPot

## MOBILE EQUIPOTENTIAL BONDING SYSTEMS

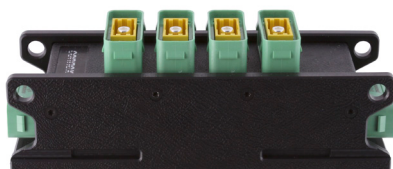


***cPot (Connex mobile equipotential bonding systems) is an innovative and cost effective solution for mobile equipotential bonding systems.***

*This system complies with all required regulations for the event DIN 15700, business and fixe installations.*

*Floor distributions, system cables and various connection options for grounding form a ready-to-plug-in system that can be used indoor and outdoor all year round. Due to its simple, fast and safe handling, cPot is particularly suitable for temporary installations (concerts, trade fairs, sporting events ...). Of course, the system also shows its strength in permanent installations, especially where systems need to be updated or plug-in points for mobile grounding systems need to be created.*

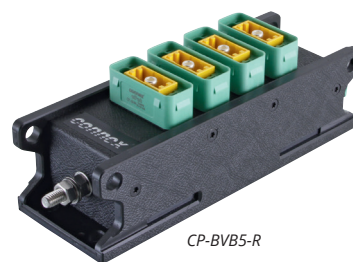
## cPot Floor powerBOX



CP-BV6-R



CP-BV6-R



CP-BVB5-R

### APPLICATION COMPACT

- > Mobile
- > Exhibitions & Events
- > Theatre
- > Stage
- > Industry
- > In- / Outdoor

■ Shockproof Easylen® Ruggbox housing ■ Flame retardant self-extinguishing ■ Clip rails for 2x truss clips (enclosed)  
Truss clips moveable on the clip rails ■ Protection class IP44 ■ Safety holes

CODE	Description Details	Order code
CP-BV6-R	6x cPot [m] powerBOX	1027377
CP-BVB5-R	5x cPot [m] to M8 stainless steel bolt powerBOX	1027379
CP-FV6-RT	6x cPot [m] with holes for ground nail	1027381



CP-FV6-RT



## CONNEX Truss clip

### APPLICATION COMPACT

- > CONNEX Ruggboxes
- > Mobile
- > Fairs & Events
- > Theatre
- > Stage
- > In- / Outdoor

■ Made of shock proof 10mm Easylen® ■ Fitting clip rails in Ruggbox housing ■ Delivery in pairs  
Hole for fixing cord

CODE	Description Details	Order code
CCL75-P2	Trussclip for pipe 48 mm (1½") Ruggbox-2 as 2pcs pack	1027380

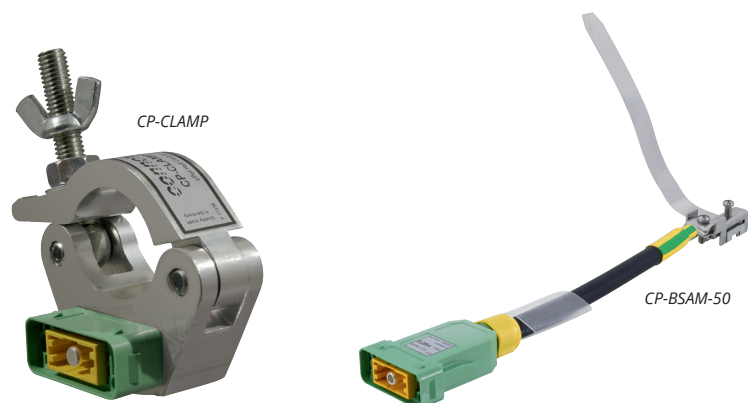


## CONNEX cPot grounding accessories

### APPLICATION COMPACT

- > Mobile
- > Exhibitions & Events
- > Theatre
- > Fixed installation
- > Stage
- > Industry
- > In- / Outdoor

■ Integration of standard grounding components ■ Disposable products (band clamps) become reusable through cPot (remain on the truss) ■ Outdoor and indoor solutions available ■ Fixed installation via connection point with large clamping space up to 35mm<sup>2</sup>



CP-ESP1,5



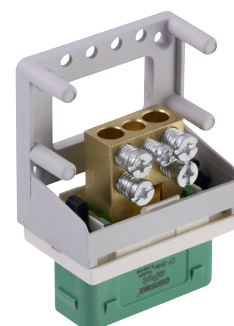
CODE	Description Details	Order code
CP-CLAMP	Half Coupler PE with 1x cPot [m] for 48 mm (1½")	1027382
CP-ESP1,5	Ground spike 1,5 m PE with 1x cPot [m]	1027386
CP-BSAM-50	0,25 m ribbon clip adapter PE cPot [m] IP65 25 mm <sup>2</sup>	1027387
CP-PTP-100	Platform terminal point 1x cPot [m]	1027385
CP-APMB-BK	Connection point mounted black 1x cPot [m] 35/25 mm <sup>2</sup>	1027384
CP-APMB-WH	Connection point mounted white 1x cPot[m] 35/25 mm <sup>2</sup>	1027383



CP-PTP-100



CP-APMB-BK



CP-APMB-WH



CP-X16-001 - CP-X25-050

## CONNEX cPot grounding cables

### APPLICATION COMPACT

- > Mobile
- > Exhibitions & Events
- > Theatre
- > Fixed installation
- > Stage
- > Industry
- > In- / Outdoor

■ Cables ready made ■ Cable in 16 mm<sup>2</sup> and 25 mm<sup>2</sup> ■ Black jacket, green-yellow inner conductor ■ Version always in female/female - [f] [f] ■ Extendable by adapter ■ Connecting cable [m] with ring lug available

CODE	Description Details	Order code
CP-X16-001	1 m cPot [f] cPot [f] 16 mm <sup>2</sup> H07RN-F1X	1027356
CP-X16-002	2 m cPot [f] cPot [f] 16 mm <sup>2</sup> H07RN-F1X	1027357
CP-X16-005	5 m cPot [f] cPot [f] 16 mm <sup>2</sup> H07RN-F1X	1027358
CP-X16-010	10 m cPot [f] cPot [f] 16 mm <sup>2</sup> H07RN-F1X	1027359
CP-X16-015	15 m cPot [f] cPot [f] 16 mm <sup>2</sup> H07RN-F1X	1027360
CP-X16-020	20 m cPot [f] cPot [f] 16 mm <sup>2</sup> H07RN-F1X	1027361
CP-X16-025	25 m cPot [f] cPot [f] 16 mm <sup>2</sup> H07RN-F1X	1027362
CP-X25-010	10 m cPot [f] cPot [f] 25 mm <sup>2</sup> H07RN-F1X	1027363
CP-X25-025	25 m cPot [f] cPot [f] 25 mm <sup>2</sup> H07RN-F1X	1027364
CP-X25-050	50 m cPot [f] cPot [f] 25 mm <sup>2</sup> H07RN-F1X	1027365
CP-CMM	Coupler male male PE green IP65	1027376
CP-X25-R8M-00025	0,25 m eyelet M8 cPot [m] 25 mm <sup>2</sup> H07RN-F1X	1027366
CP-X25-R12M-00025	0,25 m eyelet M12 cPot [m] 25 mm <sup>2</sup> H07RN-F1X	1027367
CP-X25-R12F-00025	0,25 m eyelet M12 cPot [f] 25 mm <sup>2</sup> H07RN-F1X	1027368



CP-CMM



CP-X25-R8M-00025



CP-X25-R12M-00025

## CONNEX cPot connector

### APPLICATION COMPACT

- > Mobile
- > Exhibitions & Events
- > Theatre
- > Fixed installation
- > Stage
- > Industry
- > In- / Outdoor

■ Protection class IP65 ■ Green-yellow coding ■ Extremely robust housing ■ Special connector for equipotential bonding with 2 locking tabs ■ Clips allow locking of the locking tabs (can only be released by tool) ■ 100 A contacts in crimp or axial version



CP-LTFA



CP-HTCY



CP-HTCR

CODE	Description Details	Order code
CP-LTFA	Cable female PE axial 10-25 mm <sup>2</sup> $\varnothing$ =7,5-14 mm IP65	1027369
CP-HTCY	Safety clips for housing yellow (PU=10)	1027370
CP-HTCR	Safety clips for housing red (PU=10)	1027371
CP-PMA	Panel male PE axial 10-25 mm <sup>2</sup> IP65	1027373
CP-PMB	Panel male PE terminal block 2x35/1x25 mm <sup>2</sup> IP65	1027374
CP-PM620	Panel male PE M6x20 mm IP65	1027375
CP-CMM	Coupler male male PE green IP65	1027376



CP-PMB



CP-PM620



CP-CMM



## CONNEX cPot medical Floor powerBOX

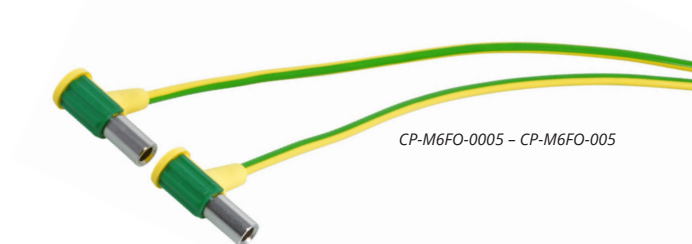
### APPLICATION COMPACT

- > Medical section
- > Hospital

■ Connection Device for potential equalization for IT networks in the medical field ■ Quick to set up, no complex installation required ■ 6x medical potential equalization bolts according to DIN 42801 ■ 4x cPot connections for potential equalization



CODE	Description Details	Order code
CP-FV4MED6-RT	4x cPot [m] 6x DIN42801 [m] medical	1027388



## CONNEX cPot medical

### APPLICATION COMPACT

- > Medical section
- > Hospital

■ Connecting cables and connection cables for medical field with connectors according to DIN 42801-2 ■ Copper cable fine stranded with a special green/yellow silicone jacket ■ Conductor insulation medical grade green/yellow Biocompatible according to EN ISO 10993-5 ■ Wipe disinfection resistant ■ "Non-sticky" surface ■ Temperature range: -25 to +180°C ■ Halogen-free according to IEC 60754-1 + VDE 0482-754-1 ■ Flame retardant and self-extinguishing according to IEC 60332-1-2 + VDE 0482-332-1-2 ■ No development of corrosive fire gases according to IEC 60754-2 + VDE 0482-754-2

CODE	Description Details	Order code
CP-M6FF-0005	0,5 m cPotmed DIN 42801 [f][f] 6 mm² gn/ye medical	1027389
CP-M6FF-001	1 m cPotmed DIN 42801 [f][f] 6 mm² gn/ye medical	1027390
CP-M6FF-002	2 m cPotmed DIN 42801 [f][f] 6 mm² gn/ye medical	1027391
CP-M6FF-003	3 m cPotmed DIN 42801 [f][f] 6 mm² gn/ye medical	1027392
CP-M6FF-004	4 m cPotmed DIN 42801 [f][f] 6 mm² gn/ye medical	1027393
CP-M6FF-005	5 m cPotmed DIN 42801 [f][f] 6 mm² gn/ye medical	1027394
CP-M6FO-0005	0,5 m cPotmed DIN 42801 [f][op]] 6 mm² gn/ye medical	1027395
CP-M6FO-001	1 m cPotmed DIN 42801 [f][op]] 6 mm² gn/ye medical	1027396
CP-M6FO-002	2 m cPotmed DIN 42801 [f][op]] 6 mm² gn/ye medical	1027397
CP-M6FO-003	3 m cPotmed DIN 42801 [f][op]] 6 mm² gn/ye medical	1027398
CP-M6FO-004	4 m cPotmed DIN 42801 [f][op]] 6 mm² gn/ye medical	1027399
CP-M6FO-005	5 m cPotmed DIN 42801 [f][op]] 6 mm² gn/ye medical	1027400

